

# **IMPROVING COMPETENCIES OF GRADUATES BASED ON THE RESULT OF TRACER STUDY**

BY.

**PRIHAT ASSIH  
DIANA ZUHROH  
SUNARDI**

**UNIVERSITY OF MERDEKA MALANG, EAST JAVA, INDONESIA.**

# Agenda of Presentation:

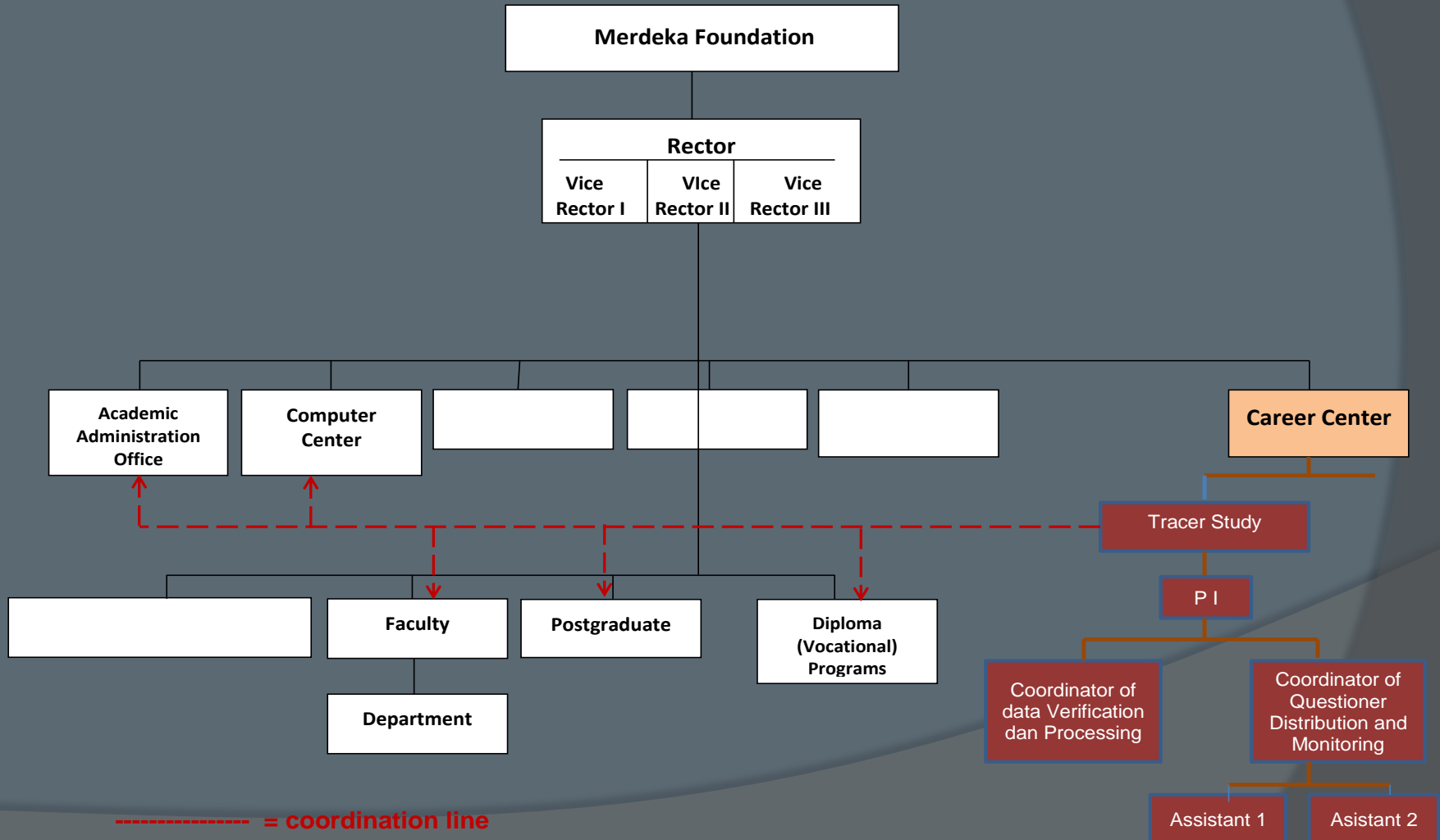
1. Responsible Institution and Organization Structure of Tracer Study at University of Merdeka Malang.
2. Preparation, Implementation and the results was obtained.
3. Remainder mechanism.
4. Strategy of Increasing respons.
5. Obstacles faced
6. Conclusion and improvements have to be made in the next Tracer study.

Responsible Institution is:



CAREER  
CENTER  
UNIVERSITY  
OF MERDEKA  
MALANG

# The Organization Structure of Career Center, University of Merdeka Malang.



# Implementation

## METHOD :

1. SURVEY METHOD WAS USED, DISTRIBUTED QUESTIONNAIRES BY ON LINE AND DELIVERY BY MAIL UPON REQUEST.
2. SUBJECT WERE ALUMNI UNMER MALANG GRADUATES IN 2013 FROM D3, D4 AND S1, THE TOTAL WAS 1137.

# Stages

## a. Preparation.

- 1) Finalization of the questionnaire with the faculty. Tracking the alumni as respondents conducted in several stages: coordination with the faculty and the Office of Academic Administration. ( Data obtained from OAA is data that has been verified by PDPT)



## Stages (cont'd)

2. Upload a questionnaire by Computer Center
3. Sending the questionnaire to respondent and monitoring the responses received on a daily basis. For those respondents who did not respond to the questionnaire within one week, then second contact, third, and even fourth contact was made. On average the respondents gave the response after a second contact.

- 4) Data verification, data processing, and interpretation/analysis of the results.
- 5) Reporting.





# Result

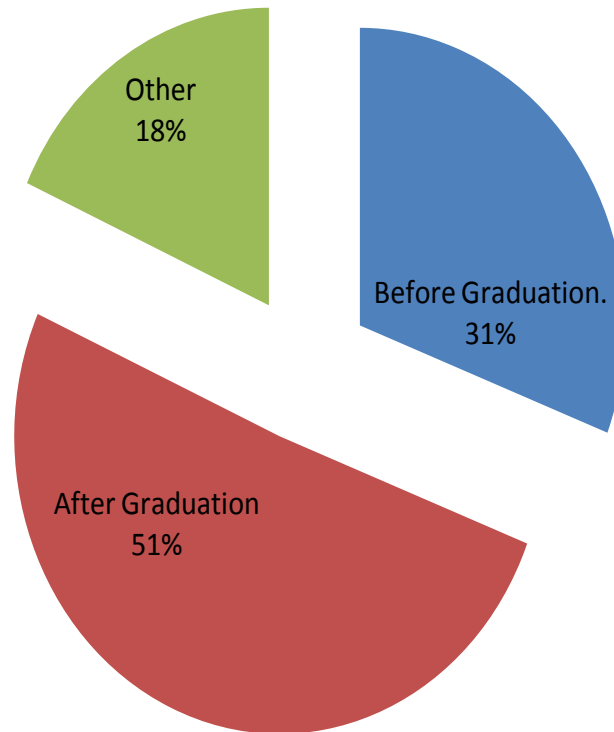
Recapitulation of Population dan Respondents for Each Faculty				
No	Faculty / Departemen	Population	Respondents	Respon Rate (%)
1	<b>Economic and Business</b>			
	Accounting	84	20	23,8
	Management	76	9	11,8
	Economic	12	3	25,0
2	<b>F. Social and Politics Science</b>			
	Public Administration	65	8	12,3
	Business Administration	25	7	28,0
	Communication	48	9	18,8
3	<b>F. Law</b>	75	9	12,0
4	<b>F. Psychology.</b>	54	9	16,7
5	<b>F. Information System</b>	344	49	14,2
6	<b>F. Engineering</b>			
	Civil Engineering	22	7	31,8
	Architectural Engineering	21	9	42,9
	Mechanical engineering	74	12	16,2
	Electrical engineering	65	9	13,8
	Industrial engineering	32	6	18,8
7	<b>D3 and D4 Tourism</b>	65	11	16,9
8	<b>D3 Finance and Bank</b>	38	16	42,1
9	<b>D3 Accounting and Tax</b>	10	2	20,0
10	<b>D3 Information</b>	12	3	25,0
11	<b>D3 English</b>	10	2	20,0
	\	1132	200	17,7

## Prosentage of Respons

- Number of Target Population 1.137
- Undelivered 225
- Target Subject 912
- Respondent 200:
  - Online : 162
  - Hardcopy : 38
- Gross Respon Rate  $200/1137 = 17,6 \%$
- Nett Respon Rate  $200/912 = 22 \%$

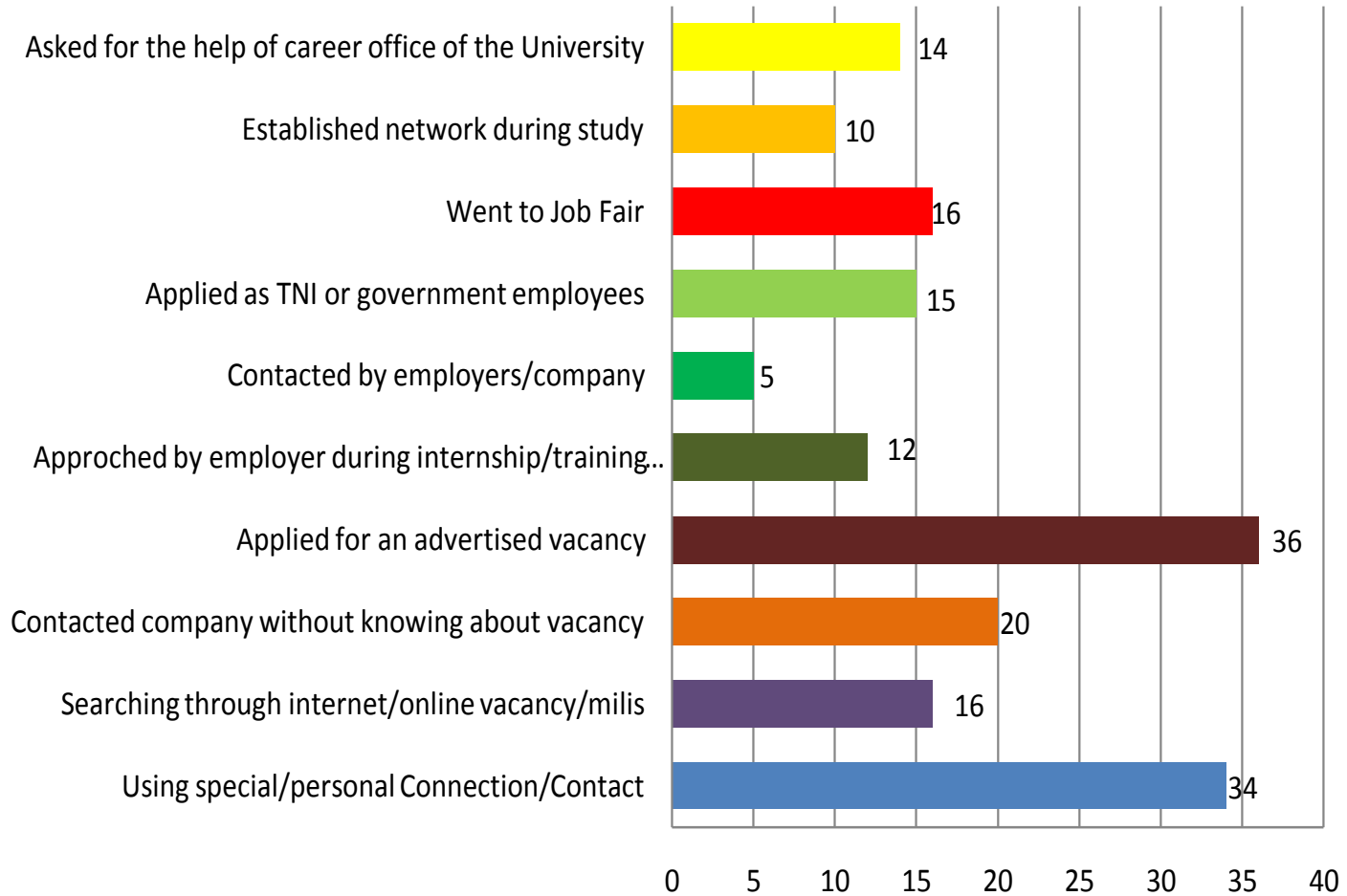
## Time of Strating Job Search

n = 115

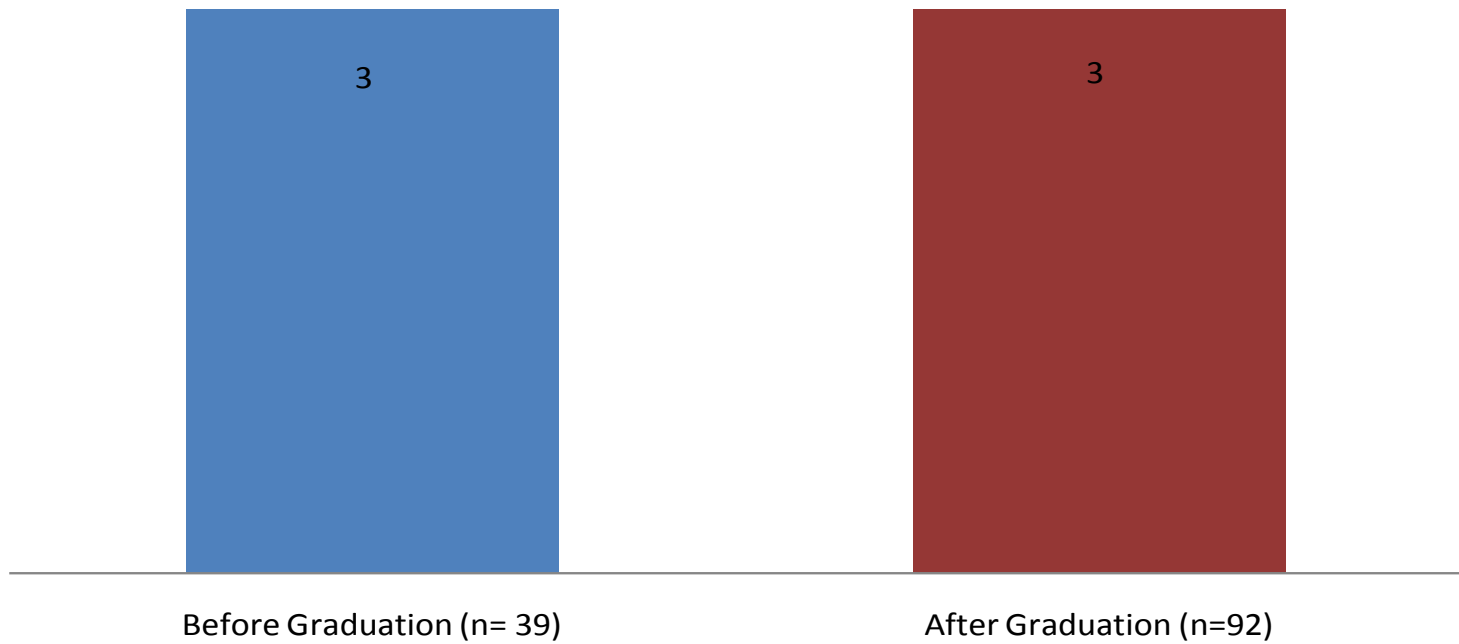


## Methods of Job Search

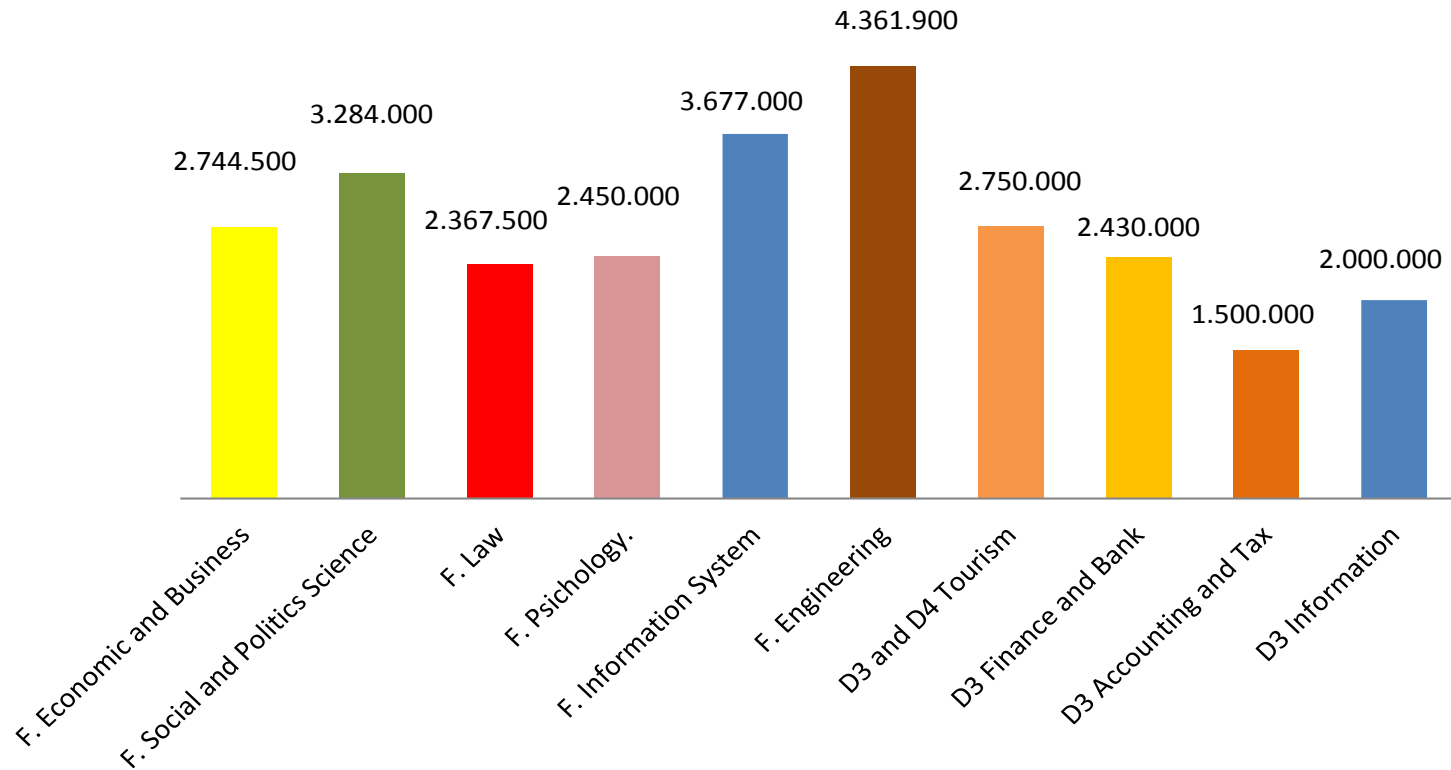
n= 179



## Length of Job Search for the First Job After and Before Graduation (Median)

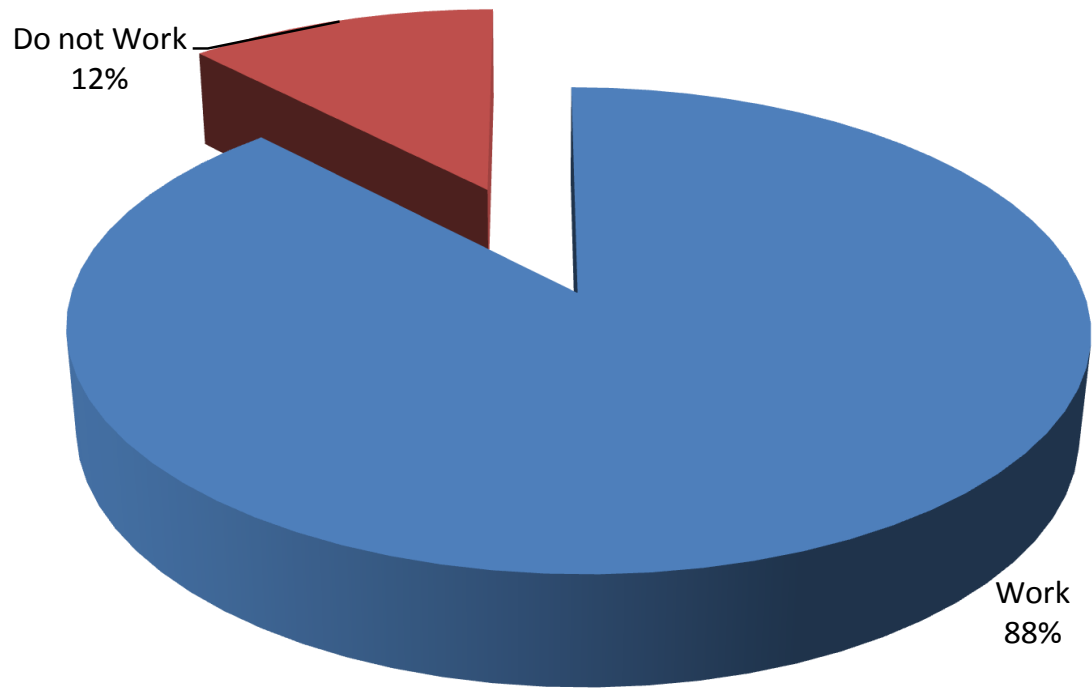


## Monthly Income (From Main Job)



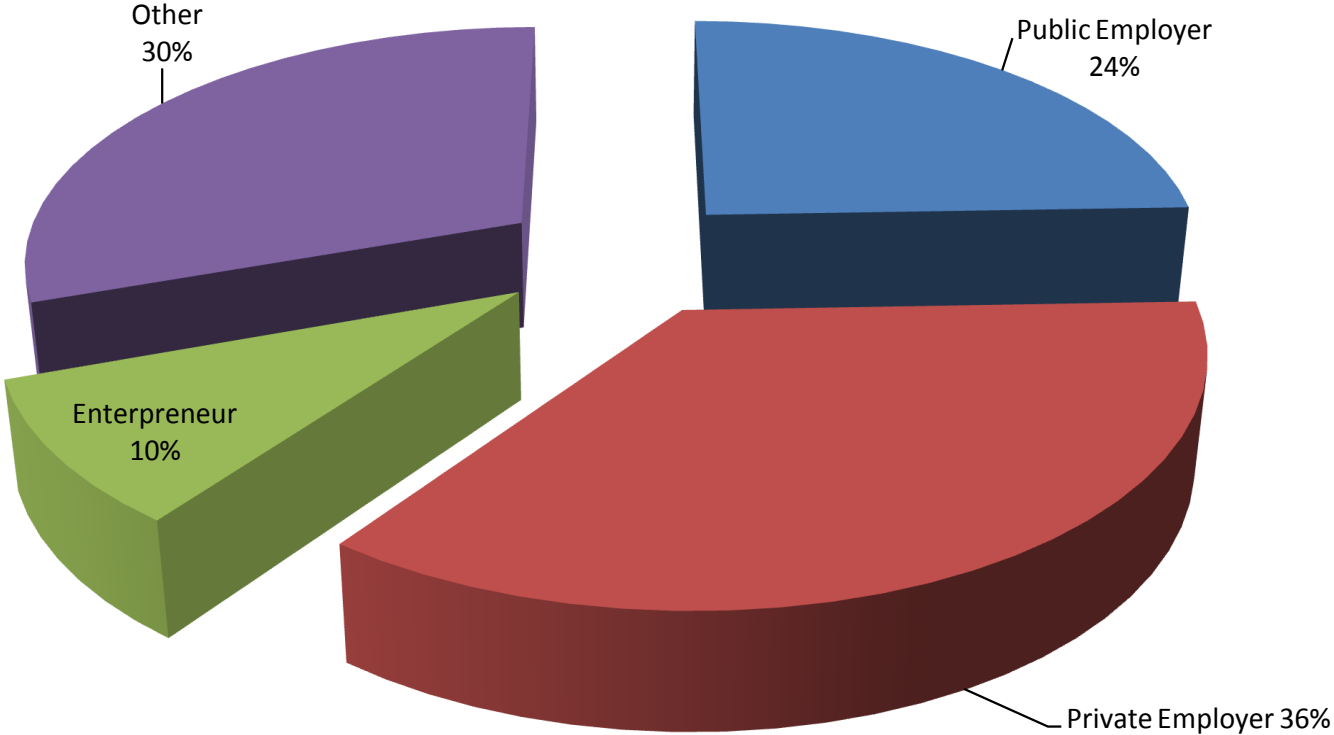
# Current Employment Situation

n=137



# Type of Employer

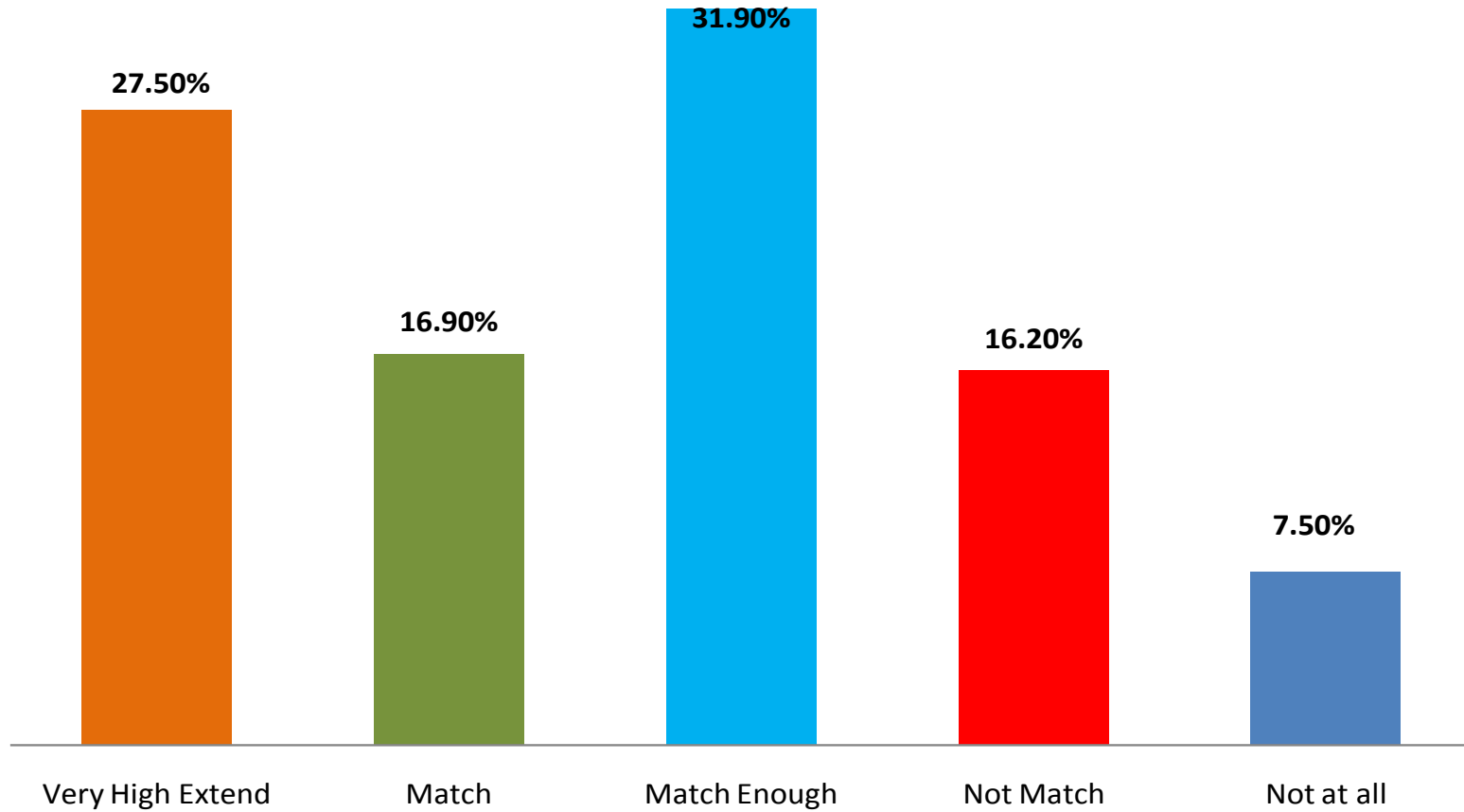
n= 137





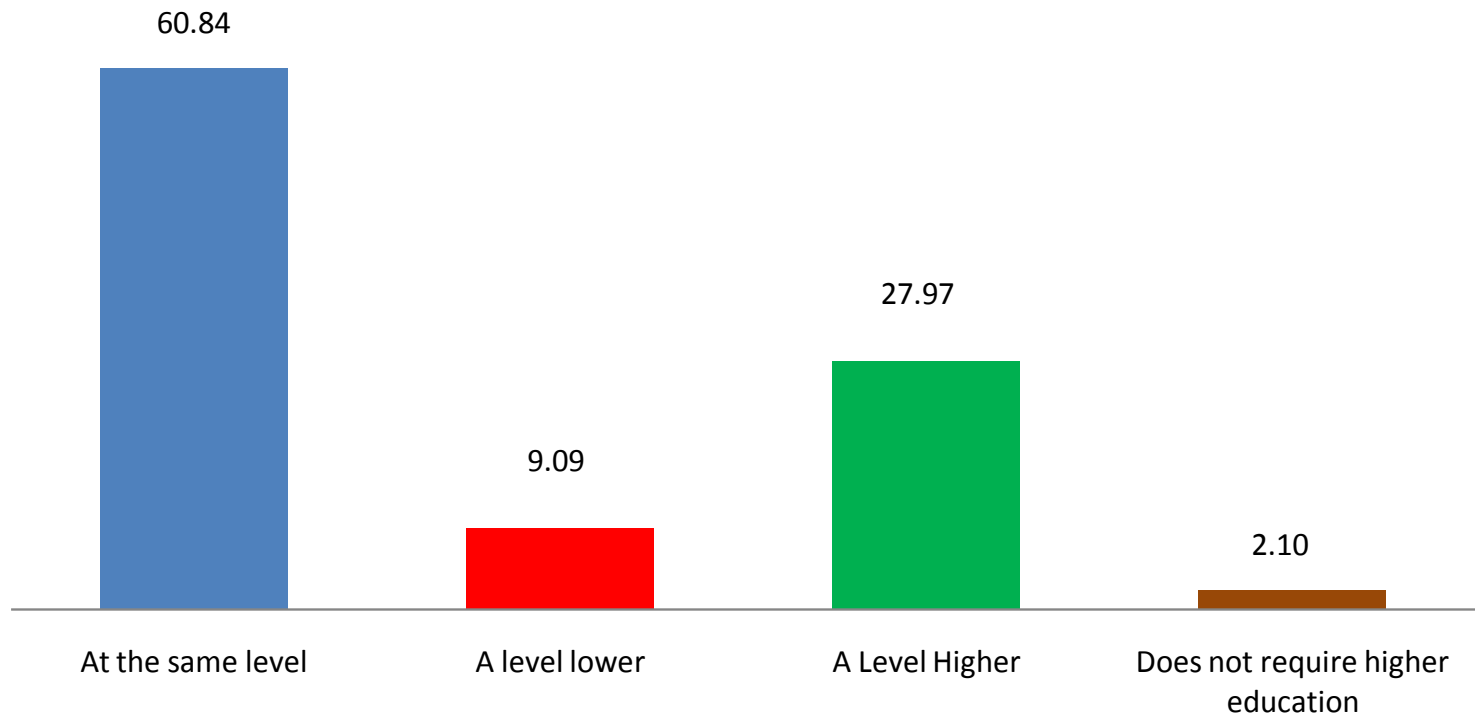
# Horizontal Matching

n=160



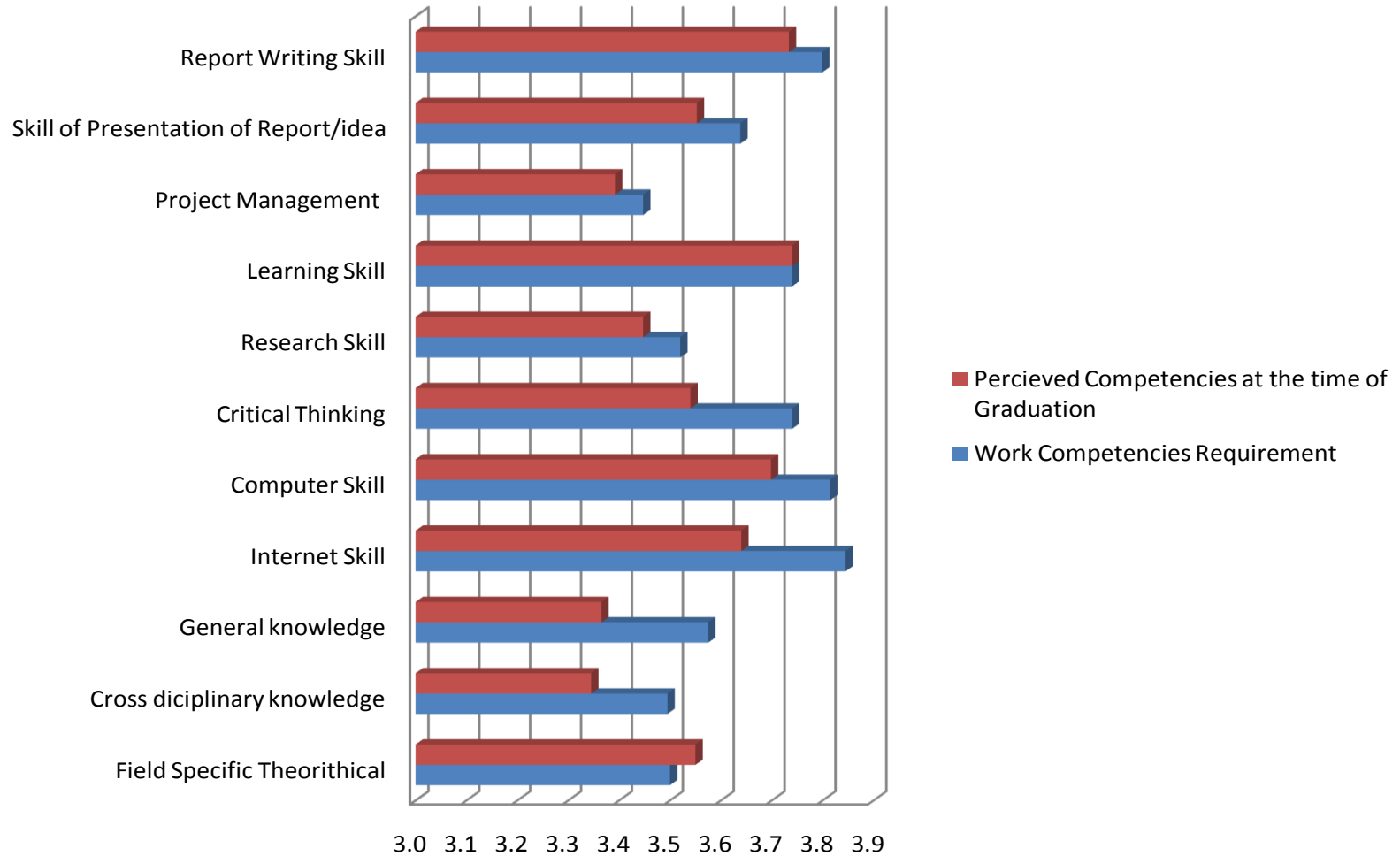
## Vertical Match

n= 143



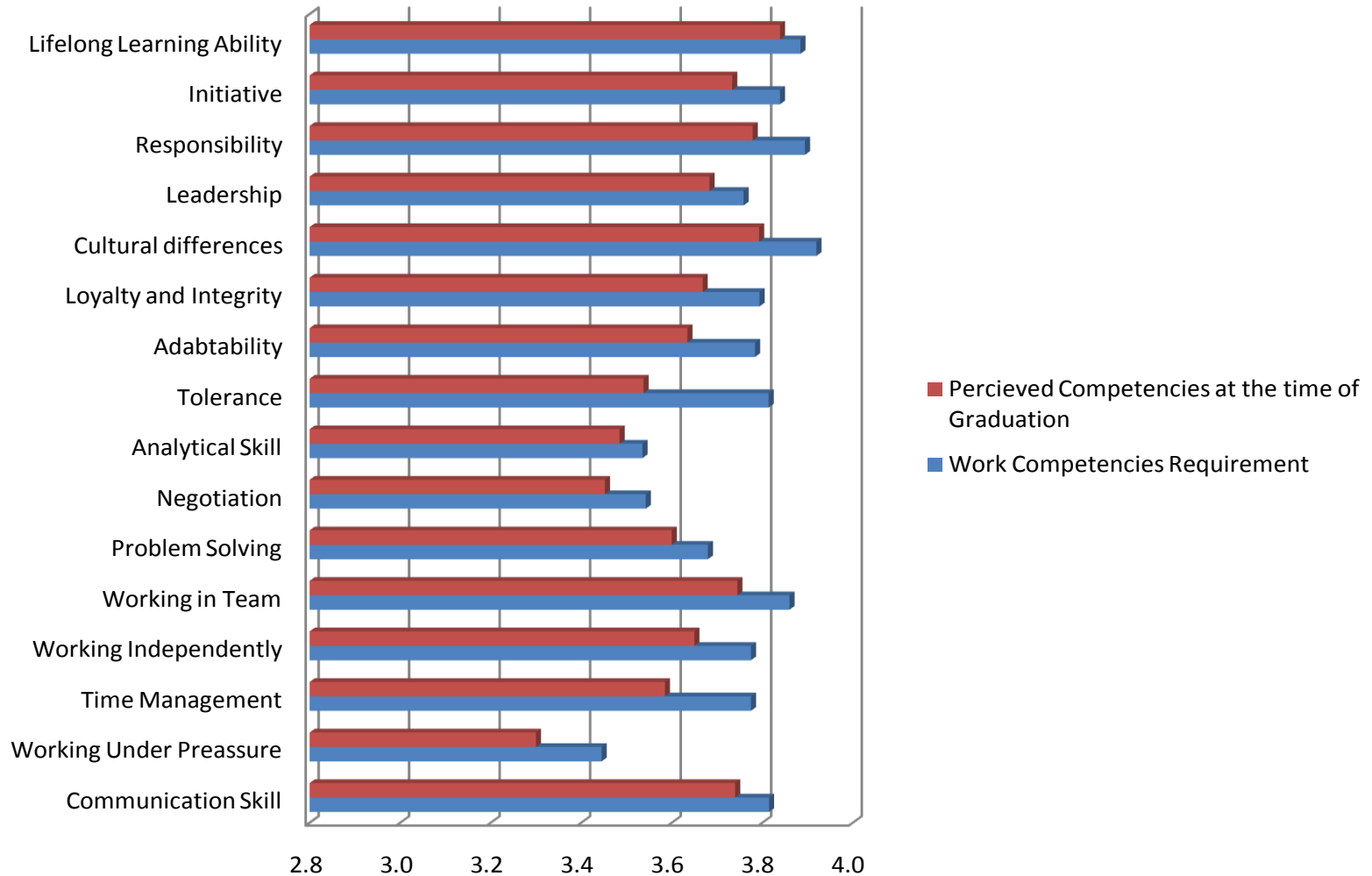
# Hardskill Competencies at the Time of Graduation

n= 200

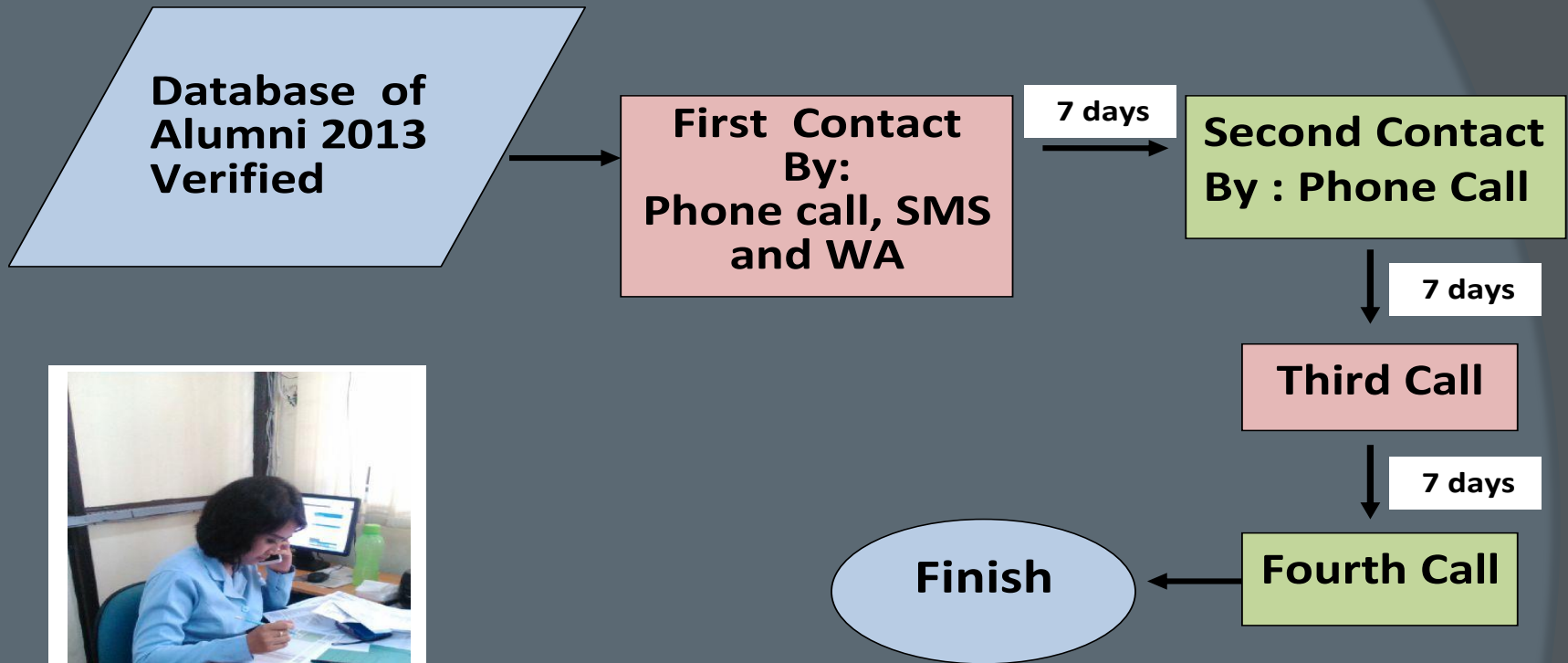


# Softskill Competencies at the Time of Graduation

n = 200



# Remainder Mechanism



# Strategy of Increasing respons.

## 1. Publish questionnair on the University web.

Berita Terkini 13-11-2015 01:21:55 [Joint Meeting and MoU Signing](#) ▶



The banner features the UNMER Malang logo at the top left. The main text reads: "Selamat Atas Diraihnya Nilai 'B' AKREDITASI INSTITUSI PERGURUAN TINGGI (AIPT) Universitas Merdeka Malang". The background shows a building and a sky.

123456789



PMB Online  
PENDAFTARAN MAHASISWA BARU



SIKAD Online  
SISTEM INFORMASI MANAJEMEN



SDM Online  
SISTEM INFORMASI MANAJEMEN



MEET THE LEADER  
Mengenal Lebih Dekat



Hasil Audit Eksternal



JobStreet.com  
MALANG



KUESIONER TRACER STU  
UNMER MALANG 2015

- [Mahasiswa UNMER Malang Juara Catur Tingkat Nasional](#)



Kantor Urusan Internasional



BP3M



LPPM



LIBRARY



DIGILIB

# The first page of online questionnaire

## TRACER STUDY UNIVERSITAS MERDEKA MALANG TAHUN 2015

Selamat Datang Para Alumni Universitas Merdeka Malang  
PANDUAN SINGKAT PENGISIAN KUESIONER

1. Tracer Study adalah aktivitas pelacakan alumni yang dilakukan oleh Universitas dalam rangka penyempurnaan kurikulum dan evaluasi proses belajar mengajar.
2. Pertanyaan dengan tanda \* (required) adalah pertanyaan yang wajib diisi. Apabila pertanyaan ini tidak diisi, maka pengisian tidak dapat diteruskan ke hal berikutnya.
3. Untuk membuka halaman selanjutnya, klik "Continue"
4. Apabila pengisian telah lengkap, jangan lupa klik "Submit".

\* Required

**Nama Alumni \***

Isikan nama lengkap Anda

**Nomor Pokok Mahasiswa**

(isikan angka NIM tanpa titik, contoh 09240012)

**Alamat Asal**

**Kode POS \***

**Nomor Telepon**

(isikan kode area diteruskan nomornya, tanpa pemisah, contoh 0341714111.

**Nomor HP**

Untuk kenyamanan Anda, kami hanya akan menggunakan SMS)

**Alamat Email**

**Fakultas**

**Jurusan**

**Jenjang**

**Tahun Lulus**

**Indeks Prestasi Kumulatif (IPK)**

(isilah dengan format x.xx; tanda pemisah dengan "titik"; misalnya 3.25)

Continue »

# Strategy of Increasing respons (cont'd)

- Information about TS also published on Facebook, the address is : Pusat Karir Merdeka Malang



[Pusat Karir Merdeka Malang](#)  
[10 Agustus](#)

Kami informasikan kembali, bagi teman-teman Alumni..  
Mohon kesediaannya untuk berpartisipasi dalam Tracer Study (Pelacakan Alumni) dengan mengisi kuesioner Tracer Study yang bisa diakses melalui web universitas..  
[www.unmer.ac.id](http://www.unmer.ac.id).. atau melalui tautan yang telah kami posting pada akun facebook Pusat Karir ini..



Terima kasih s... sebelumnya...

[UNMER MALANG](#)

Universitas Merdeka Malang - Indonesia gerbang informasi resmi. Universitas Merdeka Malang merupakan salah satu perguruan tinggi swasta di Indonesia yang berkualitas.  
[unmer.ac.id](http://unmer.ac.id)

[SukaKomentari](#)

[Bagikan](#)

[Echâ ArreManiditta](#), [Pijer Lugid Latu Rangsang](#), [Bambang Edi Kristiawan](#) dan [14 lainnya](#) menyukai ini.

[1 berbagi](#)



[Puskom Unmer Malang](#) untuk isi kuesioner klik -->>  
<https://docs.google.com/.../1gTL8n0JpAPxO.../viewform...>



[TRACER STUDY UNIVERSITAS MERDEKA MALANG TAHUN 2015](#)

[docs.google.com](https://docs.google.com)

[Suka](#) · [Balas](#) · [Hapus Pratinjau](#) · [10 Agustus pukul 9:45](#)



Tulis komentar...



## Strategy of Increasing respons (cont'd)

3. Ask for help from the lecturer, department chairman and head of the administration of the Faculty.
4. Ask for help of employees or lecturers of University of Merdeka Malang whose her/his children are alumni of Unmer Malang (in this way, mostly using questionnaires in hard copy form).

# Obstacles was Faced

The main problem were:

1. The contacts that are inactive and addresses of alumni that are not clear or changes of address.
2. Alumni awareness is still low in completing the questionnaire

# Conclusion

- Most of the alumni Unmer Malang has been working in accordance with that pursued in university education.
- The relationship between field of study and the work of the majority of graduates are: sufficiently close.
- The waiting period to get the first job is 3 months by leveraging personal connection and obtaining information from the mass media.
- Based on the charts for competencies of hard skill and soft skill, this TS results will be an important basis for the Faculty and departments in redesigning the curriculum, thus, contribution to the improvement of the competence of the alumni Unmer Malang also increased.

Improvements have to be made in the next Tracer study.

Increase the response rate by:

1. Making coordination with the Office of Student Affairs and cooperation with alumni associations in each faculty, or groups of alumni in social media.
2. Intensify in raising awareness to students about the importance of tracer studies, so hopefully, they will be more concerned with the activities of tracer study conducted by the university.



THANKYOU,  
TERIMA KASIH